

PRODUCT DATA SHEET

Ramén Ball Sector Valve Type KSG/KSGF



Ramén Valves

We know the flow

DN 80-200 | Wafer/Flanged | PN 10 | Ductile Iron | Rubber/PUR



Ramén KSG



Ramén KSGF (Flanged end connection)

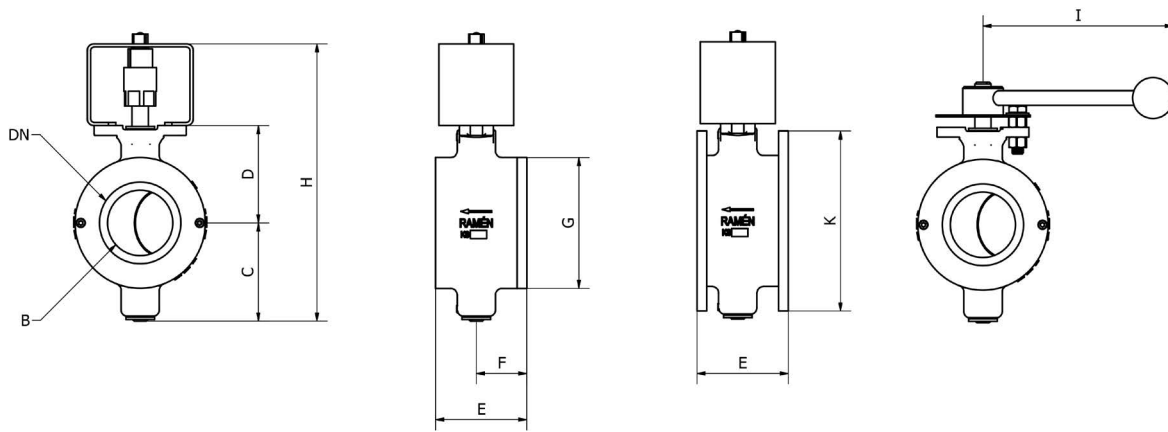
The Ramén KSG Ball Sector Valve is a rubber lined control valve that offers extended resistance to wear in various industrial applications containing abrasive particles.

All wetted parts (body, ball sector and the outlet protection ring) are lined with polyurethane (PUR) and natural rubber (NR), making particles bounce off rather than, in the case of using metal parts, cause substantial wearing.

Typical applications

- Cement mixture in silos and hoppers
- Sand pumping
- Crushers and separators, slurry mixing
- Iron ore dressing plants
- Industrial and municipal waste

Technical information		
Design	KSG (wafer), KSGF (flanged)	
Nominal sizes	DN 80 - DN 200	3"-8"
Material	Body	EN GJS-400-15 A53660-40-18
	Lining body	Elathane®(PUR)
	Shafts	EN 1.4460, AISI 329
	Ball Sector	EN GJS-400-15 A53660-40-18
	Lining ball sector	Natural rubber (NR) + Butadiene Rubber (BR)
	Lining seat	Natural rubber (NR) + Butadiene Rubber (BR)
	O-rings	Nitrile
	Bearing	Rulon®
Working pressure	Max. 5 bar (g)	
Operating temperature	Max. 60°	Max. 140° F
Characteristic	Equal percentage	
Rangeability	Up to 100:1	



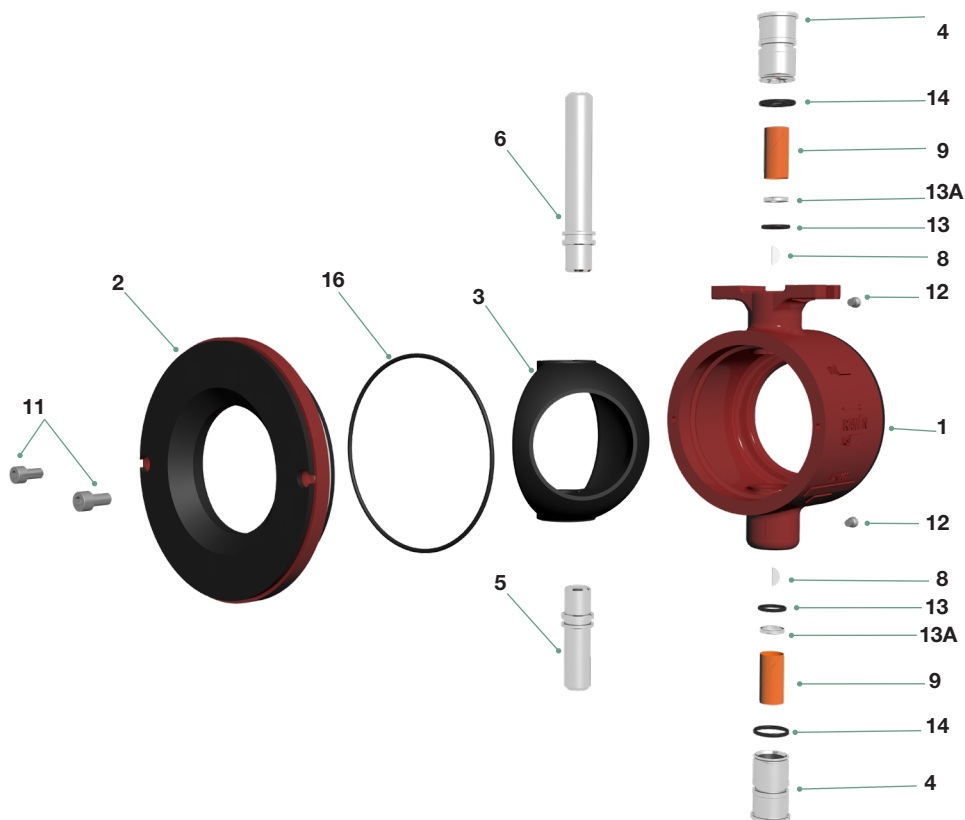
Dimensions					
DN	80	100	125	150	200
B Bore [mm]	60	75	93	110	145
C [mm]	107	118	135	167	188
D [mm]	108	119	140	162	190
E [mm]	98	118	145	180	215
F [mm]	55	62	78	95	120
G [mm]	140	160	190	220	274
H [mm]	315	337	375	454	503
I [mm]	290	290	370	370	370
K [mm]	200	220	250	285	340
Weight [kg]	6,5	9	11	23	35
Top mounting flange acc. to EN-ISO 5211 ⁽¹⁾	D17 or ⁽²⁾ 22 F07 & F10	D17 or ⁽²⁾ 22 F07 & F10	D17 or ⁽²⁾ D22 F07 & F10	D22 or ⁽²⁾ 27 F10 & F12	D22 or ⁽²⁾ D27 F10 & F12

⁽¹⁾ D refers to diagonal square size & F refers to hole pattern.

⁽²⁾ Optional

Technical specifications						
DN	80	100	125	150	200	
Kvs _v [m ³ /h]	200	345	530	680	1200	
C _v [gpm]	260	405	620	800	1400	
Actuator torque [Nm]	Recommended ⁽¹⁾	80-200	80-200	160-400	160-400	160-400
	Max.	200	200	400	400	400
Rotation angle	0°-90°	0°-90°	0°-90°	0°-90°	0°-90°	

⁽¹⁾ The lower value of the torque range can be used for on-off applications for clean media at normal temperatures. The higher value of the torque range shall be used for pneumatic actuators with positioner when high control accuracy is needed or for dirty/sticky media. Indicated torques values include safety factor, on valve's break away torque, which is at least x2.



Parts list Ramén KSG			
Part	QTY	Name	Material
1	1	Body	EN GJS-400-15 A53660-40-18
2	1	Outlet ring w. rubber seat	EN GJS-400-15 A53660-40-18
3	1	Ball sector	EN GJS-400-15 A53660-40-18
4	2	Shaft bearing SST	EN 1.4460, AISI 329
5	1	Short Shaft	EN 1.4460, AISI 329
6S/L	1	Drive Shaft, (short=S, long =L)	EN 1.4460, AISI 329
8	3	Woodruff Key	EN 1.4460 (AISI 329)
9	2	Shaft bearing	PTFE
11	2	Screw for outlet ring	EN 1.4409 (AISI 316L)
12	2	Screw for bearing sleeve (4)	EN 1.4409 (AISI 316L)
13	2	O-ring for shafts	Nitrile (std)
13A	2	Sliding ring	PTFE
14	2	O-ring for bearing sleeve	Nitrile (std)
16	1	O-ring	FKM (std)